

# Studio

Latest News, Views, and  
Breakthroughs in Precious Metal Clay!



Summer 2001  
Vol. 4 No. 2



## Shahasp Valentine — Honorable Mention

"Celeché Necklace" — fine silver PMC with white sapphire fired in place. 1-1/8" W x 1-1/4" H.

*Shahasp Valentine is a PMC jewelry artist who creates the Precieux line of jewelry in her San Francisco studio. "Each (PMC) piece takes on its own unique characteristics and personality. I sign and number each and provide a certificate of authenticity."*

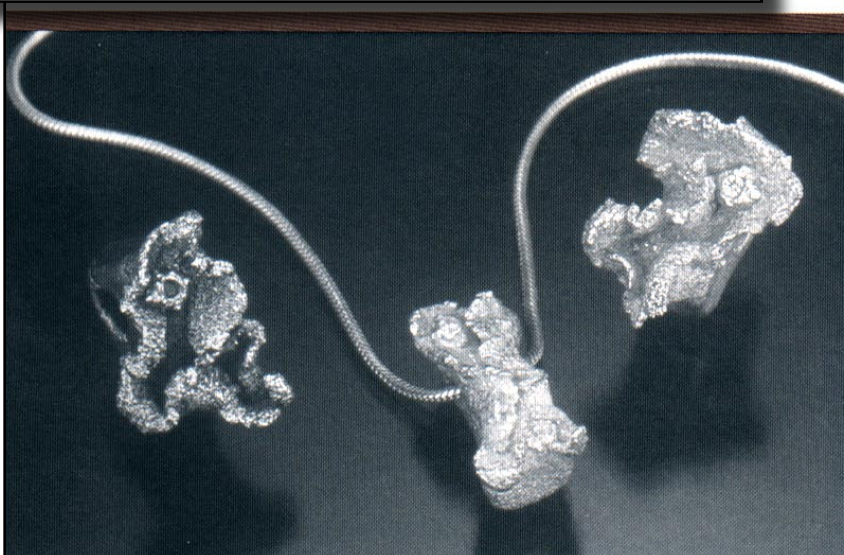
**GALLERY  
WINNERS of  
Fusion 2001**

# Studio

SUMMER SOLSTICE ISSUE!  
Latest News, Views, and  
Breakthroughs in Precious Metal Clay!



Summer 2002  
Vol. 5 No. 2



## Shahasp Valentine

"Habitat" Pendants — Series of hand-formed fine silver PMC pieces with 24K gold, precious stones, and pearls.