



93



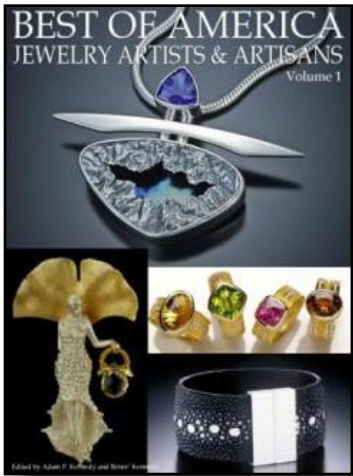
SHAHASP VALENTINE

"Lady Jessica Choker #1"
 12 x 2-1/2 x 16 x 1/8
 Hand formed fine silver precious metal clay,
 rhodolite garnets fired in place, one of a kind.
 Above.

"Celeches Necklaces #8"
 1-1/4 x 1-1/4 x 1/4
 Hand formed fine silver and 24k gold precious metal clay
 lavender sapphire in 24k gold setting fired in place, four
 white sapphires, 14k gold chain in a series, no two are alike.
 Opposite page.

www.precieux.com/enquiryform.html
www.precieux.com

94



Edited by Adam T. Kurland and Brian K...